

Moyne
events

floors & floorcoverings

floors & floorcoverings

Whatever your floor covering needs we have the solution.

Moyne Events floor covering range includes:

Tiles

Cord

Vinyl

Hardwood

Wood Laminate

Naturals

Printed Vinyl & Carpet

Our expert fitters lay carpets at hundreds of venues each year, they know how important it is to achieve the right finish on time.

Wherever possible we specify carpet that can be recycled after use. Call us for our Carpet Sustainability Policy.

How To Order

1. Select your preferred type of floor covering(s)
2. Provide us with details on the venue, the floor area (sqm), the dates for installation and lift.
3. A representative will call you to confirm your requirements and provide a quotation within the day.

t: +44 (0) 208 997 8596

e: info@moyne.co.uk

floors

Platform floors and raised seating areas are built to a high specification and could include a number of features:

Varying heights and steps

Ramps

Hand Rails

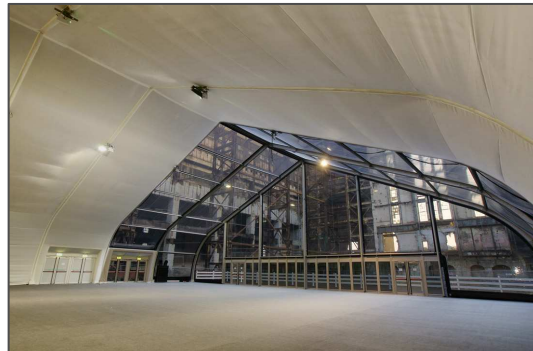
Illuminated skirting boards

Costs are provided on a per m² rate



floorcoverings

Large scale lays are undertaken for exhibition and event spaces. All types of coverings are provided either on a hire or sale basis.



floorcoverings

Solid Wood



Pearl Oak



Ruby Oak



Natural Oak



Marbled Oak



Distressed Oak



Light Oak

Wood Laminate



Walnut



Antique Oak



Lime Oak



Sandy Oak



Provence Oak



Light Oak



Gold Oak



Wenge



Rustic Oak

floorcoverings

Vinyl – Wood Effect



Light Oak



Antique Oak



Gold Oak



Sand Oak



White Oak



Honey Oak

Vinyl - Patterned



Diamond Blue



Stone



Natural Stone



Charcoal



Distressed Black



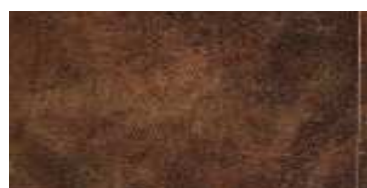
Fawn



Grey Stone



Diamond Black



Suede

floorcoverings

Natural Floor Coverings



Coconut



Seagrass



Coir



Sisal



Mountaingrass



Dragongrass

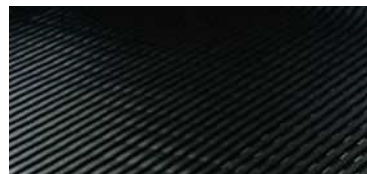
Vinyl Safety Flooring



Studded
(red / blue / grey / black)



Safetread
(black / blue / grey / beige)



Heronair Black



Silver Treadplate



Blue Treadplate
(lead / steel / aluminium)



Grid Treadplate
(beige / blue / black / grey)

Artificial Flooring



Artificial Grass



Euroturf

Velour Carpet - A high quality exhibition or event velour carpet with a deep pile and strong backing



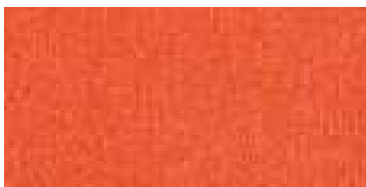
Red



Burgundy



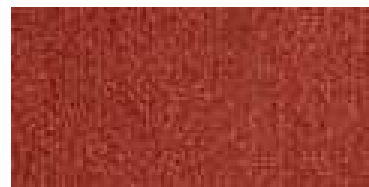
Ruby



Tango



Orange



Clay



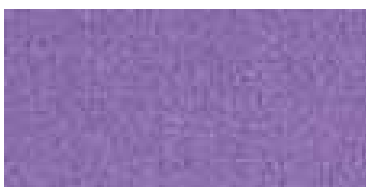
Mustard



Gold



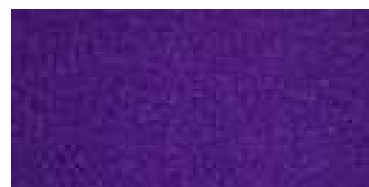
Sun Yellow



Heather



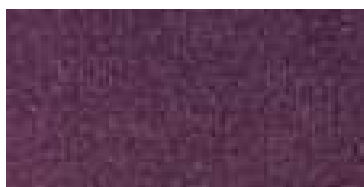
Lilac



Purple



Damson



Aubergine



Rose



Bright Blue



Royal Blue



Navy Blue

Velour Carpet - A high quality exhibition or event velour carpet with a deep pile and strong backing



Camel



Vanilla



Cream



Parchment



Snow



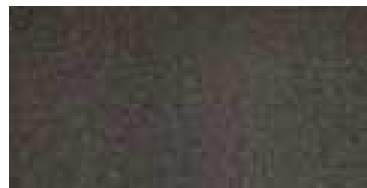
Coffee



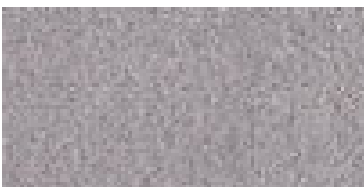
Light Grey



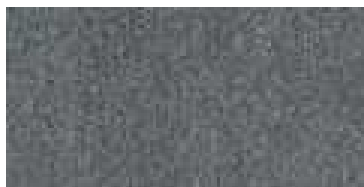
Charcoal Grey



Grey



Silver



Steel



Black



Lime Green



Grass Green



Bottle Green



Mint



Apple



Jade

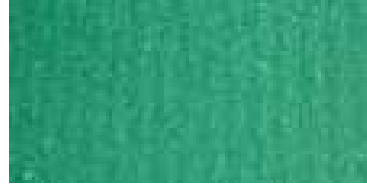
Velour Carpet - A high quality exhibition or event velour carpet with a deep pile and strong backing



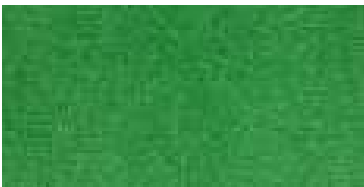
Racing Green



Sage



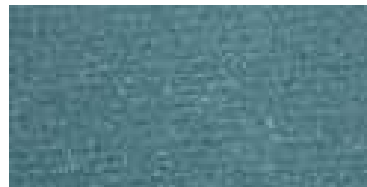
Sea Green



Emerald Green



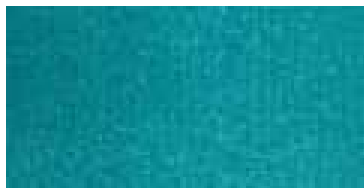
Aqua



Petrol



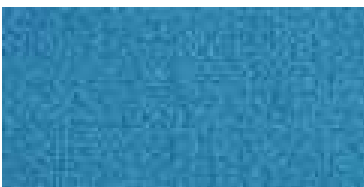
Diesel



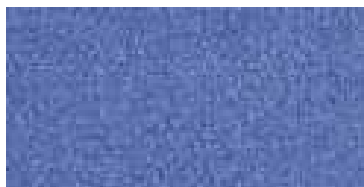
Kingfisher



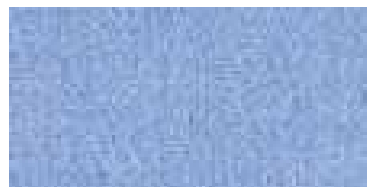
Marine Blue



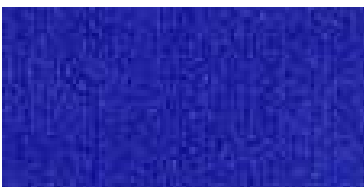
Dark Turquoise



Denim



Light Blue



Sapphire



Turquoise



Ocean Blue



Bright Blue



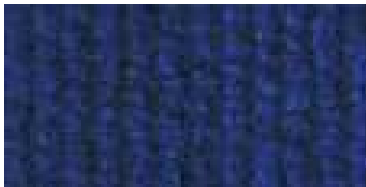
Royal Blue



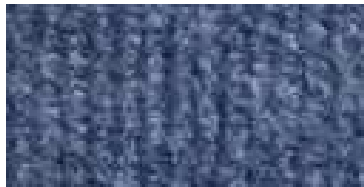
Navy Blue

Cord Carpet - A low costs ribbed carpet which is recyclable and ideal for a modest budget.

30 standard colours with 200 additional colours available. Call us for a colour match.



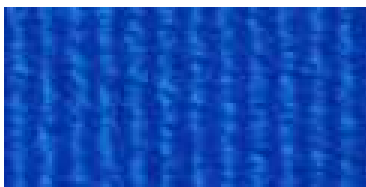
Midnight Blue



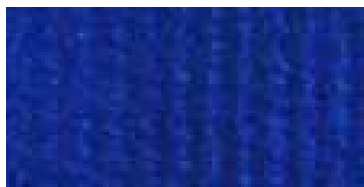
Light Blue



Dark Blue



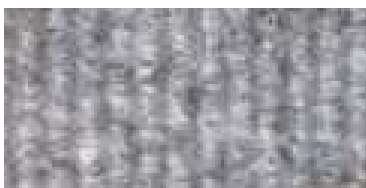
Bright Blue



Electric Blue



Silver



Pearl Grey



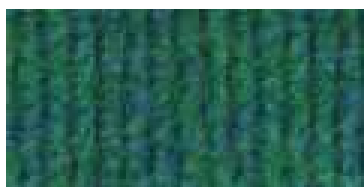
Slate



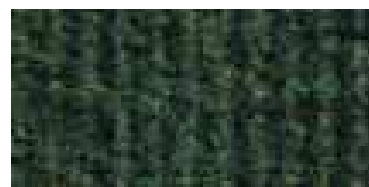
Anthracite



Spearmint



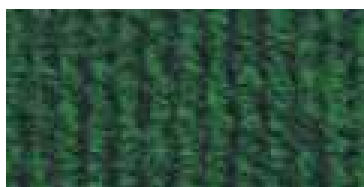
Lagoon



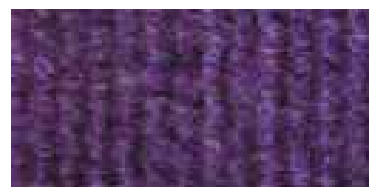
Olive Green



Apple Green



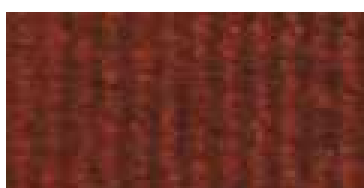
Grass Green



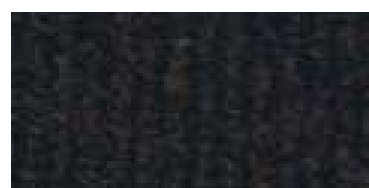
Purple



Red



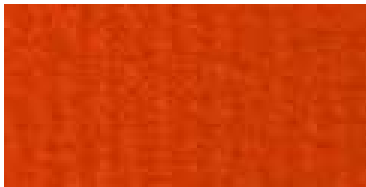
Ruby Red



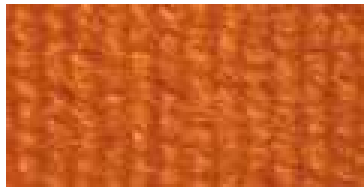
Havanna

Cord Carpet - A low costs ribbed carpet which is recyclable and ideal for a modest budget.

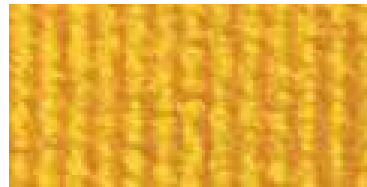
30 standard colours with 200 additional colours available. Call us for a colour match.



Orange



Tangerine



Yellow



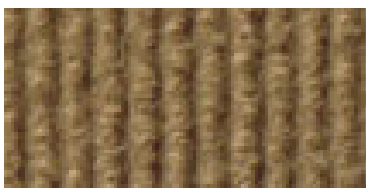
Baby Pink



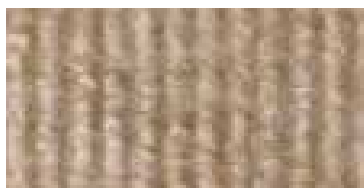
Black



White



Coffee

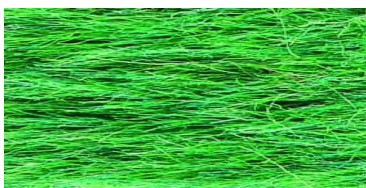


Champagne

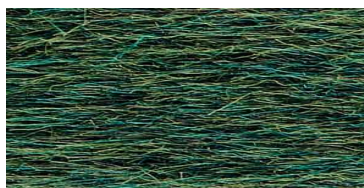


Stone

Carpet Tiles - Durable and ideal for long term use and for exhibitions or events with heavy footfall



Bright Green



Grass Green



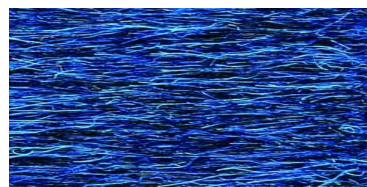
Purple Green



Purple Blue



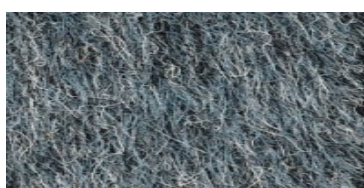
Blue



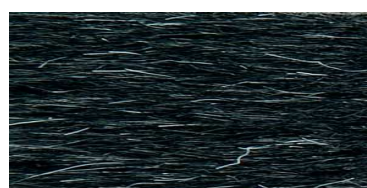
Bright Blue



Grey Blue



Denim



Anthracite

Carpet Tiles



Orange



Red Wine



Cognac



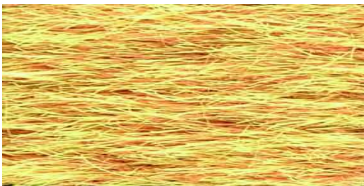
Copper



Red



Purple



Yellow



Cashmere



Stone

Bespoke Prints



Durable, full colour floor graphics are the ideal way to get your customers attention. It is the perfect material for retail display, aisle markers, exhibition halls, promotional events, museums and airports.

Logo and image printing is available on vinyl and carpet.

Terms and Conditions

1. All contracts of hire shall be deemed to incorporate these terms and conditions.
2. Prices quoted are for the duration of the exhibition or event for which they are hired and exclude VAT, which will be added at the rate ruling at the date of invoice.
3. The liabilities of the hirer commence at the time the hired articles are delivered to the site of the event or exhibition for which they are hired and continue until they are collected from the site. During this time, the hirer will:-
 - i) Keep, at the hirer's own expense, the said hired articles in good and substantial repair and condition, and in the event of any article being damaged beyond repair or lost by fire, theft or any other cause whatsoever, will pay the Company the full replacement value of the hired articles plus the original hire charge. In the event of any article being damaged and requiring repair, the hirer will pay the full cost of such repair.
4. At the discretion of the Company, refunds will be made on cancelled orders up until, and including, 7 working days prior to the commencement of the exhibition or event build period
5. Orders received and executed at an event or exhibition may be subject to an extra handling charge.
6. No liability shall attach to the Company for:-
 - a) Any delay or failure to deliver due to circumstances which are outside its control.
 - b) Loss or damage howsoever caused to customer's own goods.
 - c) Any dilapidation charges for fixing of floor coverings to exhibition hall floors. Hirers are reminded that 'laid only' sale prices do not include taking up at the end of the event or exhibition and that venues make a charge for the removal of double sided tape.
 - d) Any damage or injury caused by the misuse of the Company's property.
 - e) Equipment failure due to usage for what it was not intended or Moyne Exhibitions was not made aware of
7. The Company expressly reserves the right at its absolute discretion to suspend or cancel any services (whether in whole or in part) under its contract with the hirer in any case where the hirer is in breach of that contract or whether the same be under that contract or any other contract or arrangement between the hirer and the Company.
8. The Company reserves the right to make substitutes without prior warning for floor coverings that may be unavailable.
- 9 (a) We do not exclude our liability in respect of death or personal injury to any party resulting from negligence of ourselves, our servants or agents (but not of our sub-contractors, if any).
- b) We do not exclude our liability for loss of, or damage to, the exhibits or property of the customer where this has directly been caused by our negligence, providing that any claim in this respect is made in writing within 14 days of the problem having been brought to our notice.
- c) Any claim from (b) shall be limited to the amount of any loss or diminution in value of the goods, and not in respect of any consequential costs incurred.
12. Complaints should be submitted in writing during the open period of the event or exhibition. This will ensure that they are fully investigated on site. All complaints must be made in writing and submitted to Moyne Exhibitions within 7 working days of the close of the exhibition or event.
13. For exhibitions that the company is committed to attending in the UK, but excluding N. Ireland, our delivery and collection costs are included in the hire charge. For other exhibitions and events or private hire requirements, delivery and collection will be charged at the prevailing transport rates. With exhibitions that we are committed to attending on mainland Europe, Eire or Northern Ireland, our prices will be subject to a 20% surcharge to offset the additional costs involved.
14. For exhibitions in mainland Europe that the company commits to attending there will be a minimum delivery charge